

# Eagle Eye Equities

July 05, 2018

---

## Index

Punter's Call

Looking Trendy

Nifty Day Trader

Smart Charts

CTFT (Carry Today For Tomorrow)

Premium Technical View

Bank Nifty

Bank Nifty Day Trader

Day Trader's Hit List

Visit us at [www.sharekhan.com](http://www.sharekhan.com)

# Sharekhan

by BNP PARIBAS

For Private Circulation only

# Punter's Call

## Pullback extends

July 04, 2018

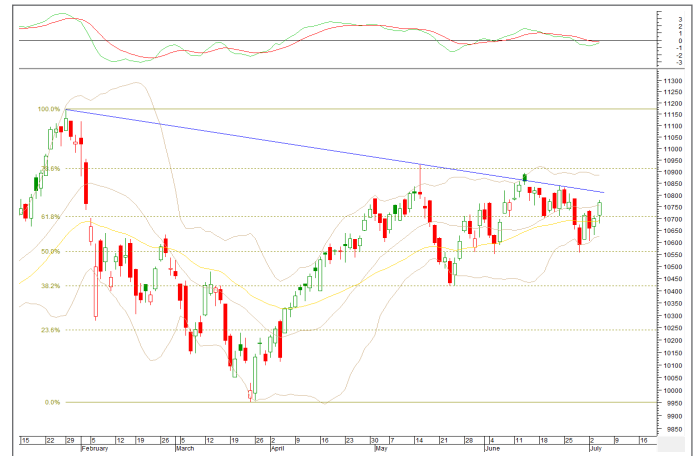
In the last session, the Nifty had formed an Inside bar after an Outside bar in the penultimate session. However, today the index managed to cross the swing high of 10736 & extended the pullback on the upside. The index received support near its crucial hourly moving averages & stretched higher till the end of the session. This indicates that, the distribution that the benchmark index is witnessing for last few sessions is still in continuation. In terms of the price patterns, it can form a distribution triangle. Also, the Nifty seems to be heading for another retest of the medium term falling trendline from the all time high of 11171. Hence 10800-10860 shall be the key hurdle zone to watch out for. On the downside, 10604-10557 is a key support zone, below which, a larger downside will be confirmed.

### Other technical observations

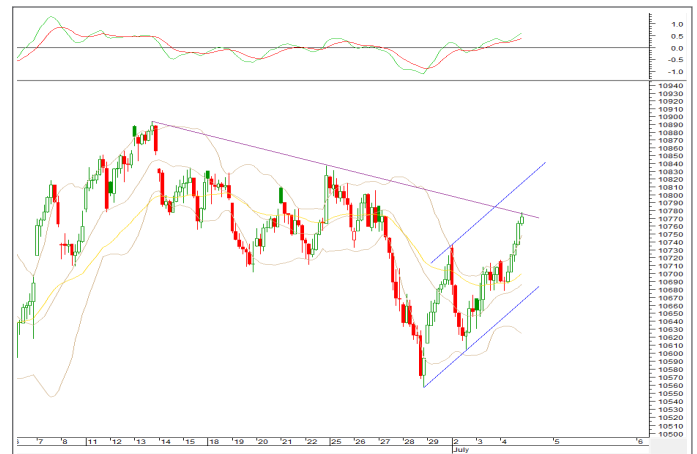
On the daily chart, the Nifty is above the 20-day moving average (DMA) and the 40-DEMA, i.e. 10756 and 10691 respectively. The momentum indicator is in bearish mode on the daily chart.

On the hourly chart, the Nifty is above the 20-hour moving average (HMA) and the 40-HEMA, i.e. 10686 and 10699 respectively. The hourly momentum indicator is in bullish mode. The market breadth was negative with 826 advances and 903 declines on the National Stock Exchange.

Nifty daily: 10,769.90



60-minute



### Market breadth

|                     | BSE                | NSE                 |
|---------------------|--------------------|---------------------|
| Todays Close        | 35,645.40          | 10,769.90           |
| Advances            | 1265               | 826                 |
| Decline             | 1349               | 903                 |
| Unchanged           | 131                | 335                 |
| <b>Volume (Rs.)</b> | <b>2,873.91 cr</b> | <b>25,070.18 cr</b> |

## Looking Trendy

### Short Term Trend

| Index | Target | Trend | Reversal | Support / Resistance |
|-------|--------|-------|----------|----------------------|
| Nifty | 10160  | ↓     | 10930    | 10160 / 10930        |

### Medium Term Trend

| Index | Target | Trend | Reversal | Support / Resistance |
|-------|--------|-------|----------|----------------------|
| Nifty | 9800   | ↓     | 11172    | 9800 / 11172         |

#### Icon guide

|      |        |            |                     |                   |
|------|--------|------------|---------------------|-------------------|
| ↑ Up | ↓ Down | ↔ Sideways | ↘ Downswing matures | ↗ Upswing matures |
|------|--------|------------|---------------------|-------------------|

## Nifty Day Trader

| Support | Resistance |
|---------|------------|
| 10691   | 10837      |
| 10605   | 10893      |
| 10558   | 10929      |
| 20 DSMA | 40 DEMA    |
| 10756   | 10691      |

## Smart Charts

| Date      | Scrip Name              | Action | Stop Loss (On closing Basis ) | Buy Price/ Sell Price | Call Closing Price/ CMP | Potential% P/L at Exit/ Current | Target 1 | Target 2 |
|-----------|-------------------------|--------|-------------------------------|-----------------------|-------------------------|---------------------------------|----------|----------|
| 2-Jul-18  | DHFL July Fut           | Sell   | 650.00                        | 627.75                | <b>625.00</b>           | 0.44%                           | 580.00   | 560.00   |
| 2-Jul-18  | HDFC LTD July Fut       | Sell   | 1,933.00                      | 1,888.75              | <b>1,909.35</b>         | -1.09%                          | 1,813.00 | 1,735.00 |
| 27-Jun-18 | Ibulhsgfin July Fut     | Sell   | 1,220.00                      | 1,187.05              | <b>1,140.90</b>         | 3.89%                           | 1,115.00 | 1,067.00 |
| 27-Jun-18 | M&M Fin July Fut        | Sell   | 499.00                        | 479.65                | <b>461.50</b>           | 3.78%                           | 445.00   | 430.00   |
| 27-Jun-18 | Manappuram Fin July Fut | Sell   | 104.50                        | 100.65                | <b>97.80</b>            | 2.83%                           | 93.50    | 88.00    |

**NOTE:** Kindly note that all stop losses in Smart Charts are on closing basis unless specified.

**TPB:** Trailing profit booked

## CTFT (Carry Today For Tomorrow)

| Action date | Scrip Name    | Action | Segments | Stop Loss/ Reversal | Reco Price | Closing Price/ CMP | Potential P/L at CMP (%) | Target 1 | Target 2 |
|-------------|---------------|--------|----------|---------------------|------------|--------------------|--------------------------|----------|----------|
| 4-Jul-18    | GAIL July Fut | Buy    | Fut      | 346.50              | 350.65     | <b>348.80</b>      | -0.53%                   | 355.00   | 358.00   |
| 3-Jul-18    | Mindtree Ltd  | Buy    | Cash     | <b>Exit</b>         | 1,004.75   | <b>1,008.65</b>    | 0.39%                    | 1,025.00 | 1,040.00 |

**TPB:** Trailing profit booked

- 1) The stop loss should be placed after 9.17am in order to avoid freak trade
- 2) The same will be revised in the TradeTiger terminal every day for the pop-ups

## Premium Technical View

| Action date | Scrip Name          | Action | Segments | Stop loss (On Closing Basis ) | Reco Price | Closing Price/ CMP | Potential P/L at CMP(%) | Target 1 | Target 2 |
|-------------|---------------------|--------|----------|-------------------------------|------------|--------------------|-------------------------|----------|----------|
| 25-Jun-18   | Union Bank July Fut | Sell   | Fut      | <b>85.00</b>                  | 84.00      | <b>80.10</b>       | 4.64%                   | 77.50    | 72.00    |
| 14-Jun-18   | City Union Bank     | Buy    | Cash     | 179.00                        | 188.00     | <b>187.85</b>      | -0.08%                  | 197.50   | 210.00   |

\*DCL # CMP ^Intra-day Tgt. = Target Rwd. = Reward

# Bank Nifty

## Short Term Trend

| Index      | Target | Trend | Reversal | Support / Resistance |
|------------|--------|-------|----------|----------------------|
| Bank Nifty | 24325  | ↓     | 26975    | 24325 / 26975        |

## Medium Term Trend

| Index      | Target | Trend | Reversal | Support / Resistance |
|------------|--------|-------|----------|----------------------|
| Bank Nifty | 23500  | ↓     | 27250    | 23500 / 27250        |

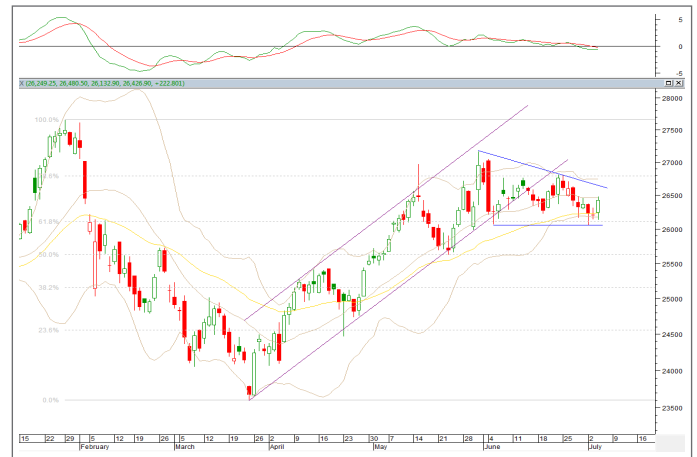
### Icon guide

|      |        |            |                     |                   |
|------|--------|------------|---------------------|-------------------|
| ↑ Up | ↓ Down | ↔ Sideways | ↘ Downswing matures | ↗ Upswing matures |
|------|--------|------------|---------------------|-------------------|

## Bank Nifty Day Trader

| Support | Resistance |
|---------|------------|
| 26241   | 26634      |
| 26061   | 26807      |
| 25980   | 27000      |
| 20 DSMA | 40 DEMA    |
| 26467   | 26241      |

Bank Nifty Daily



## Day Trader's Hit List

| For July 05, 2018   |                |         |             |                   |         |                                     |
|---------------------|----------------|---------|-------------|-------------------|---------|-------------------------------------|
| Scrip Name          | Support Levels |         | Close (Rs.) | Resistance Levels |         | Action                              |
|                     | S2             | S1      |             | R1                | R2      |                                     |
| NIFTY Futures       | 10628.0        | 10693.0 | 10,768.00   | 10790.0           | 10873.0 | Go Long AboveR1 / Go Short Below s1 |
| Bank Nifty Futures  | 26066.0        | 26242.0 | 26,425.00   | 26475.0           | 26750.0 | Go Long AboveR1 / Go Short Below s1 |
| Axis Bank           | 499.0          | 510.0   | 514.75      | 519.0             | 525.0   | Go Long AboveR1 / Go Short Below s1 |
| BHEL                | 67.0           | 68.5    | 69.20       | 70.0              | 70.8    | Go Short Below S1                   |
| BPCL                | 359.0          | 365.0   | 367.85      | 375.0             | 379.0   | Go Short Below S1                   |
| INFOSYS             | 1331.0         | 1338.0  | 1,345.20    | 1358.0            | 1375.0  | Go Long AboveR1                     |
| ICICI Bank          | 265.0          | 271.0   | 273.25      | 276.0             | 280.0   | Go Long AboveR1 / Go Short Below s1 |
| LIC Housing         | 450.0          | 458.0   | 463.00      | 470.0             | 476.0   | Go Short Below S1                   |
| LNT                 | 1216.0         | 1243.0  | 1,259.50    | 1264.0            | 1278.0  | Go Long AboveR1 / Go Short Below s1 |
| Reliance Industries | 970.0          | 982.0   | 990.10      | 995.0             | 1016.0  | Go Long AboveR1 / Go Short Below s1 |
| SBI                 | 252.0          | 254.5   | 257.45      | 260.0             | 264.0   | Go Long AboveR1 / Go Short Below s1 |
| SunPharma           | 566            | 573     | 579.30      | 589               | 601     | Go Long AboveR1 / Go Short Below s1 |
| Tata Motors         | 256.0          | 265.0   | 267.05      | 271.5             | 276.0   | Go Short Below S1                   |
| Yes Bank            | 329.0          | 333.0   | 335.55      | 337.5             | 341.0   | Go Long AboveR1 / Go Short Below s1 |
| TISCO               | 559.0          | 566.0   | 571.10      | 573.0             | 580.0   | Go Long AboveR1 / Go Short Below s1 |
| TCS                 | 1843.0         | 1857.0  | 1,866.15    | 1880.0            | 1897.0  | Go Long AboveR1                     |

\*Note: Closing price of Nifty futures is last traded price of Nifty futures on NSE  
SL=Stoploss

# Sharekhan

by BNP PARIBAS

Know more about our products and services

## For Private Circulation only

**Disclaimer:** This document has been prepared by Sharekhan Ltd. (SHAREKHAN) and is intended for use only by the person or entity to which it is addressed to. This Document may contain confidential and/or privileged material and is not for any type of circulation and any review, retransmission, or any other use is strictly prohibited. This Document is subject to changes without prior notice. Kindly note that this document is based on technical analysis by studying charts of a stock's price movement and trading volume, as opposed to focusing on a company's fundamentals and as such, may not match with a report on a company's fundamentals. (Technical specific) This document does not constitute an offer to sell or solicitation for the purchase or sale of any financial instrument or as an official confirmation of any transaction. Though disseminated to all customers who are due to receive the same, not all customers may receive this report at the same time. SHAREKHAN will not treat recipients as customers by virtue of their receiving this report.

The information contained herein is obtained from publicly available data or other sources believed to be reliable and SHAREKHAN has not independently verified the accuracy and completeness of the said data and hence it should not be relied upon as such. While we would endeavour to update the information herein on reasonable basis, SHAREKHAN, its subsidiaries and associated companies, their directors and employees ("SHAREKHAN and affiliates") are under no obligation to update or keep the information current. Also, there may be regulatory, compliance, or other reasons that may prevent SHAREKHAN and affiliates from doing so. This document is prepared for assistance only and is not intended to be and must not alone be taken as the basis for an investment decision. Recipients of this report should also be aware that past performance is not necessarily a guide to future performance and value of investments can go down as well. The user assumes the entire risk of any use made of this information. Each recipient of this document should make such investigations as it deems necessary to arrive at an independent evaluation of an investment in the securities of companies referred to in this document (including the merits and risks involved), and should consult its own advisors to determine the merits and risks of such an investment. The investment discussed or views expressed may not be suitable for all investors. We do not undertake to advise you as to any change of our views. Affiliates of Sharekhan may have issued other reports that are inconsistent with and reach different conclusion from the information presented in this report.

This report is not directed or intended for distribution to, or use by, any person or entity who is a citizen or resident of or located in any locality, state, country or other jurisdiction, where such distribution, publication, availability or use would be contrary to law, regulation or which would subject SHAREKHAN and affiliates to any registration or licencing requirement within such jurisdiction. The securities described herein may or may not be eligible for sale in all jurisdictions or to certain category of investors. Persons in whose possession this document may come are required to inform themselves of and to observe such restriction.

The analyst certifies that the analyst has not dealt or traded directly or indirectly in securities of the company and that all of the views expressed in this document accurately reflect his or her personal views about the subject company or companies and its or their securities and do not necessarily reflect those of SHAREKHAN. The analyst further certifies that neither he nor his relatives has any direct or indirect financial interest nor have actual or beneficial ownership of 1% or more in the securities of the company nor have any material conflict of interest nor has served as officer, director or employee or engaged in market making activity of the company. Further, the analyst has also not been a part of the team which has managed or co-managed the public offerings of the company and no part of the analyst's compensation was, is or will be, directly or indirectly related to specific recommendations or views expressed in this document.

Either SHAREKHAN or its affiliates or its directors or employees / representatives / clients or their relatives may have position(s), make market, act as principal or engage in transactions of purchase or sell of securities, from time to time or may be materially interested in any of the securities or related securities referred to in this report and they may have used the information set forth herein before publication. SHAREKHAN may from time to time solicit from, or perform investment banking, or other services for, any company mentioned herein. Without limiting any of the foregoing, in no event shall SHAREKHAN, any of its affiliates or any third party involved in, or related to, computing or compiling the information have any liability for any damages of any kind.

Compliance Officer: Mr. Joby John Meledan; Tel: 022-61150000; For any queries or grievances kindly email [igc@sharekhan.com](mailto:igc@sharekhan.com) or contact: [myaccount@sharekhan.com](mailto:myaccount@sharekhan.com)

**Registered Office:** Sharekhan Limited, 10th Floor, Beta Building, Lodha iThink Techno Campus, Off. JVLR, Opp. Kanjurmarg Railway Station, Kanjurmarg (East), Mumbai – 400042, Maharashtra. Tel: 022 - 61150000. Sharekhan Ltd.: SEBI Regn. Nos.: BSE / NSE / MSEI (CASH / F&O / CD) / MCX - Commodity: INZ000171337; DP: NSDL/CDSL-IN-DP-365-2018; PMS: INP000005786; Mutual Fund: ARN 20669; Research Analyst: INH000000370; For any complaints email at [igc@sharekhan.com](mailto:igc@sharekhan.com). Disclaimer: Client should read the Risk Disclosure Document issued by SEBI & relevant exchanges and the T&C on [www.sharekhan.com](http://www.sharekhan.com); Investment in securities market are subject to market risks, read all the related documents carefully before investing.