

Eagle Eye Equities

July 11, 2018

Index

Punter's Call
Looking Trendy
Nifty Day Trader
Smart Charts
Momentum Swing
Momentum Cash Ideas
CTFT (Carry Today For Tomorrow)
Premium Technical View
Bank Nifty
Bank Nifty Day Trader
Day Trader's Hit List

Visit us at www.sharekhan.com

Sharekhan

by BNP PARIBAS

For Private Circulation only

Punter's Call

Hurdles surpassed by the bulls

July 10, 2018

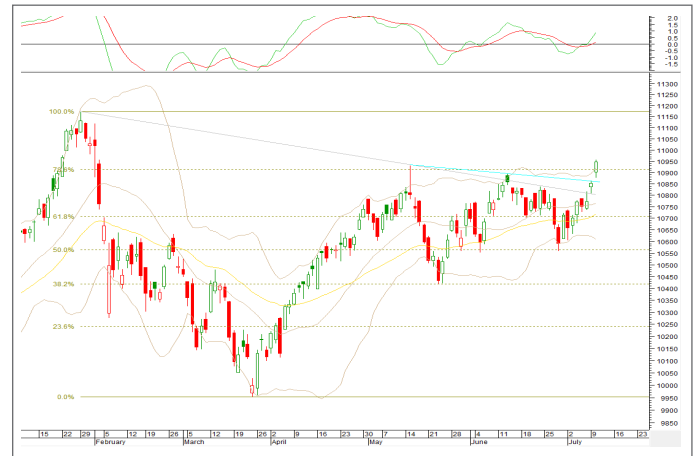
The Nifty opened gap up today & traded with a positive bias throughout the day. With the opening gap, the Nifty crossed a falling trendline as well as a swing high of 10893. It also went on to cross the May high of 10929 as the day progressed. The Index also managed to surpass 78.6% retracement of the fall from 11171 to 9951 on a closing basis. The key Fibonacci level was placed at 10910. Thus the bulls seem to be pushing the index for higher levels. The daily upper Bollinger Band that had become flat over last several sessions has now started expansion along with the price action. Hence the index now looks set to test its weekly upper Bollinger Band, which is close to 11100. On the other hand, the level of 10800 shall act as a crucial support

Other technical observations

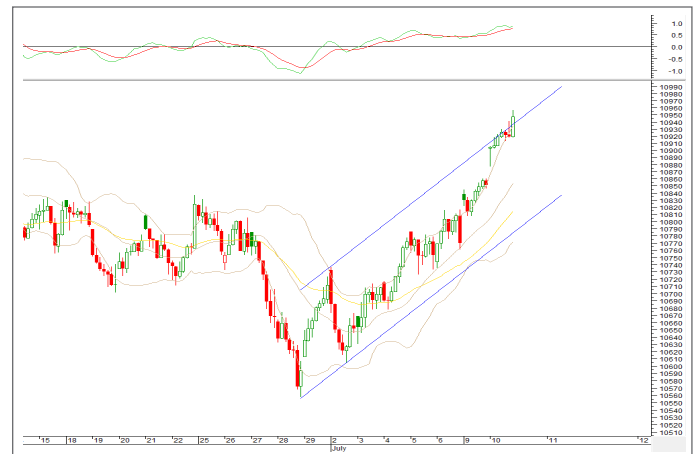
On the daily chart, the Nifty is above the 20-day moving average (DMA) and the 40-DEMA, i.e. 10764 and 10717 respectively. The momentum indicator is in bullish mode on the daily chart.

On the hourly chart, the Nifty is above the 20-hour moving average (HMA) and the 40-HEMA, i.e. 10853 and 10814 respectively. The hourly momentum indicator is in bullish mode. The market breadth was positive with 1193 advances and 525 declines on the National Stock Exchange.

Nifty daily: 10947.25



60-minute



Market breadth

	BSE	NSE
Today's Close	36239.62	10947.25
Advances	1664	1193
Decline	972	525
Unchanged	140	345
Volume (Rs.)	3287.12 cr	27650.32 cr

Looking Trendy

Short Term Trend

Index	Target	Trend	Reversal	Support / Resistance
Nifty	11100	↑	10800	10800 / 11100

Medium Term Trend

Index	Target	Trend	Reversal	Support / Resistance
Nifty	9800	↓	11172	9800 / 11172

Icon guide

↑ Up	↓ Down	↔ Sideways	↘ Downswing matures	↗ Upswing matures
------	--------	------------	---------------------	-------------------

Nifty Day Trader

Support	Resistance
10930	11000
10876	11100
10816	11172
20 DSMA	40 DEMA
10764	10717

Smart Charts

Date	Scrip Name	Action	Stop Loss (On closing Basis)	Buy Price/ Sell Price	Call Closing Price/ CMP	Potential% P/L at Exit/ Current	Target 1	Target 2
10-Jul-18	BHEL July Fut	Buy	69.00	71.85	71.70	-0.21%	76.00	79.50
5-Jul-18	STAR July Fut	Sell	437.00	406.60	400.20	1.57%	336.00	282.00
2-Jul-18	DHFL July Fut	Sell	650.00	627.75	613.65	2.25%	580.00	560.00
27-Jun-18	Ibulhsgfin July Fut	Sell	Exit	1187.05	1151.75	2.97%	1115.00	1067.00
27-Jun-18	M&M Fin July Fut	Sell	Exit	479.65	481.50	-0.39%	445.00	430.00

NOTE: Kindly note that all stop losses in Smart Charts are on closing basis unless specified.

TPB: Trailing profit booked

Momentum Swing

Action Date	Scrip Name	Action	Stop Loss/ Reversal	Buy Price/ Sell Price	Call Closing Price/CMP	Potential% P/L at Exit/ Current	Target 1	Target 2
10-Jul-18	ICICI Bank July Fut	Buy	270.50	274.30	273.20	-0.40%	280.00	283.00

NOTE: Kindly note that all stop losses in Momentum swing are on an intra-day basis.

TPB: Trailing profit booked

- 1) The stop loss should be placed after 9.17am in order to avoid freak trade
- 2) The same will be revised in the TradeTiger terminal every day for the pop-ups

Momentum Cash Ideas

Action Date	Scrip Name	Action	Stop Loss/ Reversal	Buy Price/ Sell Price	Call Closing Price/CMP	Potential% P/L at Exit/ Current	Target 1	Target 2
9-Jul-18	IRB Infra	Buy	205.40	212.00	212.90	0.42%	219.00	225.00
9-Jul-18	SPARC	Buy	374.00	384.75	380.85	-1.01%	392.00	400.00
6-Jul-18	M & M	Buy	900.00	923.20	930.55	0.80%	948.00	970.00

TPB: Trailing profit booked

- 1) The stop loss should be placed after 9.17am in order to avoid freak trade
- 2) The same will be revised in the TradeTiger terminal every day for the pop-ups

CTFT (Carry Today For Tomorrow)

Action date	Scrip Name	Action	Segments	Stop Loss/ Reversal	Reco Price	Closing Price/ CMP	Potential P/L at CMP (%)	Target 1	Target 2
10-Jul-18	Balrampur Chini	Buy	Cash	62.70	64.40	65.85	2.25%	67.00	69.00

TPB: Trailing profit booked

- 1) The stop loss should be placed after 9.17am in order to avoid freak trade
- 2) The same will be revised in the TradeTiger terminal every day for the pop-ups

Premium Technical View

Action date	Scrip Name	Action	Segments	Stop loss (On Closing Basis)	Reco Price	Closing Price/ CMP	Potential P/L at CMP(%)	Target 1	Target 2
14-Jun-18	City Union Bank	Buy	Cash	Stopped Out	188.00	175.00	-6.91%	197.50	210.00

*DCL # CMP ^Intra-day Tgt. = Target Rwd. = Reward

Bank Nifty

Short Term Trend

Index	Target	Trend	Reversal	Support / Resistance
Bank Nifty	27530	↑	26490	26490 / 27530

Medium Term Trend

Index	Target	Trend	Reversal	Support / Resistance
Bank Nifty	23500	↓	27653	23500 / 27653

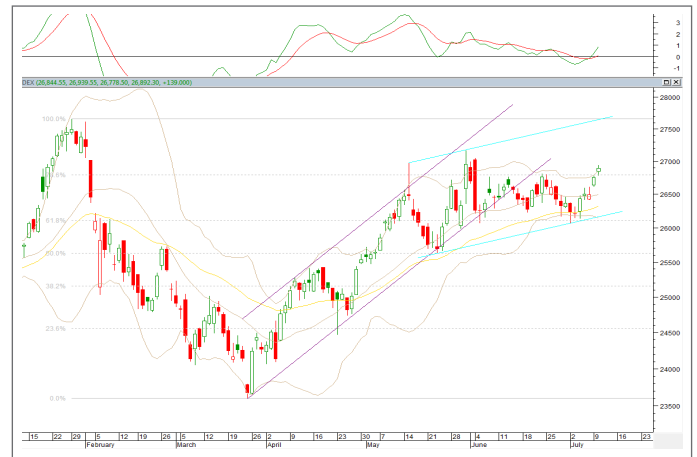
Icon guide

↑ Up	↓ Down	↔ Sideways	↘ Downswing matures	↗ Upswing matures
------	--------	------------	---------------------	-------------------

Bank Nifty Day Trader

Support	Resistance
26778	26975
26627	27165
26498	27300
20 DSMA	40 DEMA
26498	26319

Bank Nifty Daily



Day Trader's Hit List

For July 11, 2018						
Scrip Name	Support Levels		Close (Rs.)	Resistance Levels		Action
	S2	S1		R1	R2	
NIFTY Futures	10864.0	10905.0	10947.4	10986.0	11030.0	Go Long AboveR1
Bank Nifty Futures	26675.0	26780.0	26879.9	26990.0	27088.0	Go Long AboveR1
Axis Bank	523.0	527.0	531.90	536.0	541.0	Go Long AboveR1
BHEL	70.0	70.8	71.6	72.4	73.2	Go Long AboveR1
BPCL	367.5	371.5	374.80	378.0	382.0	Go Short Below S1
INFOSYS	1273.0	1287.0	1300.0	1314.0	1328.0	Go Long AboveR1
ICICI Bank	267.5	270.5	273.2	276.0	279.0	Go Short Below S1
LIC Housing	486.0	491.0	495.9	500.5	506.0	Go Long AboveR1
LNT	1258.0	1270.0	1283.5	1299.0	1311.0	Go Long AboveR1
Reliance Industries	1007.0	1017.0	1027.5	1037.0	1048.0	Go Long AboveR1
SBI	258.0	260.5	263.2	266.0	268.5	Go Short Below S1
SunPharma	552.5	559	565.0	572	578	Go Short Below S1
Tata Motors	270.5	273.0	275.5	278.0	280.5	Go Long AboveR1
Yes Bank	366.0	369.5	372.7	376.0	379.5	Go Long AboveR1
TISCO	558.0	564.0	568.9	574.0	579.0	Go Long AboveR1
TCS	1843.0	1860.0	1876.0	1892.0	1910.0	Go Long AboveR1

*Note: Closing price of Nifty futures is last traded price of Nifty futures on NSE
SL=Stoploss

Sharekhan

by BNP PARIBAS

Know more about our products and services

For Private Circulation only

Disclaimer: This document has been prepared by Sharekhan Ltd. (SHAREKHAN) and is intended for use only by the person or entity to which it is addressed to. This Document may contain confidential and/or privileged material and is not for any type of circulation and any review, retransmission, or any other use is strictly prohibited. This Document is subject to changes without prior notice. Kindly note that this document is based on technical analysis by studying charts of a stock's price movement and trading volume, as opposed to focusing on a company's fundamentals and as such, may not match with a report on a company's fundamentals. (Technical specific) This document does not constitute an offer to sell or solicitation for the purchase or sale of any financial instrument or as an official confirmation of any transaction. Though disseminated to all customers who are due to receive the same, not all customers may receive this report at the same time. SHAREKHAN will not treat recipients as customers by virtue of their receiving this report.

The information contained herein is obtained from publicly available data or other sources believed to be reliable and SHAREKHAN has not independently verified the accuracy and completeness of the said data and hence it should not be relied upon as such. While we would endeavour to update the information herein on reasonable basis, SHAREKHAN, its subsidiaries and associated companies, their directors and employees ("SHAREKHAN and affiliates") are under no obligation to update or keep the information current. Also, there may be regulatory, compliance, or other reasons that may prevent SHAREKHAN and affiliates from doing so. This document is prepared for assistance only and is not intended to be and must not alone be taken as the basis for an investment decision. Recipients of this report should also be aware that past performance is not necessarily a guide to future performance and value of investments can go down as well. The user assumes the entire risk of any use made of this information. Each recipient of this document should make such investigations as it deems necessary to arrive at an independent evaluation of an investment in the securities of companies referred to in this document (including the merits and risks involved), and should consult its own advisors to determine the merits and risks of such an investment. The investment discussed or views expressed may not be suitable for all investors. We do not undertake to advise you as to any change of our views. Affiliates of Sharekhan may have issued other reports that are inconsistent with and reach different conclusion from the information presented in this report.

This report is not directed or intended for distribution to, or use by, any person or entity who is a citizen or resident of or located in any locality, state, country or other jurisdiction, where such distribution, publication, availability or use would be contrary to law, regulation or which would subject SHAREKHAN and affiliates to any registration or licencing requirement within such jurisdiction. The securities described herein may or may not be eligible for sale in all jurisdictions or to certain category of investors. Persons in whose possession this document may come are required to inform themselves of and to observe such restriction.

The analyst certifies that the analyst has not dealt or traded directly or indirectly in securities of the company and that all of the views expressed in this document accurately reflect his or her personal views about the subject company or companies and its or their securities and do not necessarily reflect those of SHAREKHAN. The analyst further certifies that neither he nor his relatives has any direct or indirect financial interest nor have actual or beneficial ownership of 1% or more in the securities of the company nor have any material conflict of interest nor has served as officer, director or employee or engaged in market making activity of the company. Further, the analyst has also not been a part of the team which has managed or co-managed the public offerings of the company and no part of the analyst's compensation was, is or will be, directly or indirectly related to specific recommendations or views expressed in this document.

Either SHAREKHAN or its affiliates or its directors or employees / representatives / clients or their relatives may have position(s), make market, act as principal or engage in transactions of purchase or sell of securities, from time to time or may be materially interested in any of the securities or related securities referred to in this report and they may have used the information set forth herein before publication. SHAREKHAN may from time to time solicit from, or perform investment banking, or other services for, any company mentioned herein. Without limiting any of the foregoing, in no event shall SHAREKHAN, any of its affiliates or any third party involved in, or related to, computing or compiling the information have any liability for any damages of any kind.

Compliance Officer: Mr. Joby John Meledan; Tel: 022-61150000; For any queries or grievances kindly email igc@sharekhan.com or contact: myaccount@sharekhan.com

Registered Office: Sharekhan Limited, 10th Floor, Beta Building, Lodha iThink Techno Campus, Off. JVLR, Opp. Kanjurmarg Railway Station, Kanjurmarg (East), Mumbai – 400042, Maharashtra. Tel: 022 - 61150000. Sharekhan Ltd.: SEBI Regn. Nos.: BSE / NSE / MSEI (CASH / F&O / CD) / MCX - Commodity: INZ000171337; DP: NSDL/CDSL-IN-DP-365-2018; PMS: INP000005786; Mutual Fund: ARN 20669; Research Analyst: INH000000370; For any complaints email at igc@sharekhan.com. Disclaimer: Client should read the Risk Disclosure Document issued by SEBI & relevant exchanges and the T&C on www.sharekhan.com; Investment in securities market are subject to market risks, read all the related documents carefully before investing.