

# Eagle Eye Equities

May 09, 2018

---

## Index

Punter's Call  
Looking Trendy  
Nifty Day Trader  
Smart Charts  
Momentum Swing  
Premium Technical View  
Bank Nifty  
Bank Nifty Day Trader  
Day Trader's Hit List

Visit us at [www.sharekhan.com](http://www.sharekhan.com)

# Sharekhan

by BNP PARIBAS

For Private Circulation only

# Punter's Call

## Nifty consolidates

May 05, 2018

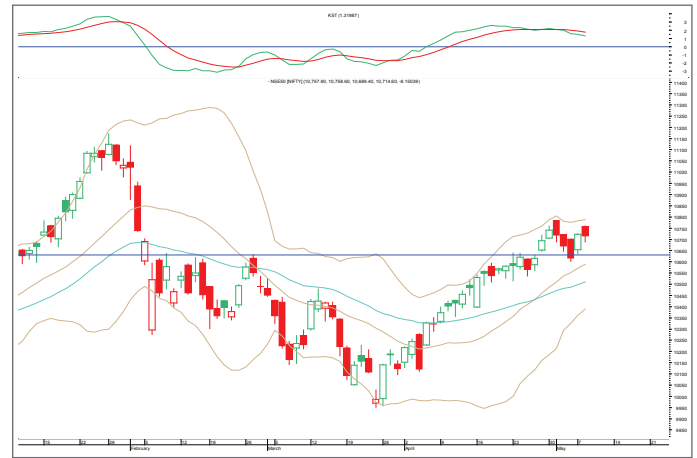
The Nifty witnessed gap up opening and ended the trading session on a positive note. However, in today's trading session, the Nifty witnessed volatility throughout the day. In the near term, the index has multiple supports in the zone of 10600 – 10630 on the way down, whereas on the way up, the swing high of 10785 will provide a crucial resistance. The index can make a move towards 10910 i.e. 78.6% of its previous fall, once it breaches the level of 10785. The short term trend is bullish as the index is forming higher top higher top bottom and is trading above the daily moving averages. Overall, we have a bullish outlook on the index for the short term with a target 10910 and reversal placed at 10500.

### Other technical observations

On the daily chart, the Nifty is above the 20-day moving average (DMA) and the 40-DEMA, i.e. 10558 and 10509 respectively. The momentum indicator is bearish on the daily chart.

On the hourly chart, the Nifty is between the 20-hour moving average (HMA) and the 40-HEMA, i.e. 10677 and 10682 respectively. The hourly momentum indicator is bullish and market breadth was negative with 644 advances and 882 declines on the National Stock Exchange (NSE).

Nifty daily: 10,717.80



60-minute



### Market breadth

	BSE	NSE
Todays Close	35,216.32	10,717.80
Advances	1172	644
Decline	1507	882
Unchanged	131	61
<b>Volume (Rs.)</b>	<b>4,567.03 cr</b>	<b>34,175.66 cr</b>

## Looking Trendy

### Short Term Trend

Index	Target	Trend	Reversal	Support / Resistance
Nifty	10910	↑	10500	10500 / 10910

### Medium Term Trend

Index	Target	Trend	Reversal	Support / Resistance
Nifty	9800	↓	11172	9800 / 11172

#### Icon guide

↑ Up	↓ Down	↔ Sideways	↘ Downswing matures	↗ Upswing matures
------	--------	------------	---------------------	-------------------

## Nifty Day Trader

Support	Resistance
10635	10785
10588	10850
10509	10910
20 DSMA	40 DEMA
10588	10509

## Smart Charts

Date	Scrip Name	Action	Stop Loss (On closing Basis )	Buy Price/ Sell Price	Call Closing Price/ CMP	Potential% P/L at Exit/ Current	Target 1	Target 2
19-Apr-18	Ktk Bank May Fut	Sell	Exit	121.85	119.70	1.76%	111.00	106.00
2-May-18	LIC Housing May Fut	Sell	571.00	543.20	514.50	5.28%	513.00	498.00
3-May-18	Tata Comm May Fut	Sell	640.00	618.70	614.35	0.70%	592.00	590.00
3-May-18	Dalmia Bharat May Fut	Sell	Exit	2,972.00	2,883.70	2.97%	2,750.00	2,650.00
8-May-18	Andhra Bank May Fut	Sell	38.50	37.20	37.90	-1.88%	35.00	32.00
8-May-18	DCB Bank May Fut	Buy	192.50	198.40	198.20	-0.10%	214.00	225.00

**NOTE:** Kindly note that all stop losses in Smart Charts are on closing basis unless specified.

**TPB:** Trailing profit booked

## Momentum Swing

Action Date	Scrip Name	Action	Stop Loss/ Reversal	Buy Price/ Sell Price	Call Closing Price/CMP	Potential% P/L at Exit/ Current	Target 1	Target 2
3-May-18	MRPL May Fut	Sell	Exit	105.95	106.70	-0.71%	103.00	100.00

**NOTE:** Kindly note that all stop losses in Momentum swing are on an intra-day basis.

**TPB:** Trailing profit booked

- 1) The stop loss should be placed after 9.17am in order to avoid freak trade
- 2) The same will be revised in the TradeTiger terminal every day for the pop-ups

## Premium Technical View

Action date	Scrip Name	Action	Segments	Stop loss (On Closing Basis )	Reco Price	Closing Price/ CMP	Potential P/L at CMP(%)	Target 1	Target 2
30-Apr-18	IRB Infra	Buy	Cash	250.00	268.00	<b>261.75</b>	-2.33%	300.00	330.00

\*DCL # CMP ^Intra-day Tgt. = Target Rwd. = Reward

# Bank Nifty

## Short Term Trend

Index	Target	Trend	Reversal	Support / Resistance
Bank Nifty	26785	↑	25150	25150 / 26785

## Medium Term Trend

Index	Target	Trend	Reversal	Support / Resistance
Bank Nifty	23500	↓	27150	23500 / 27150

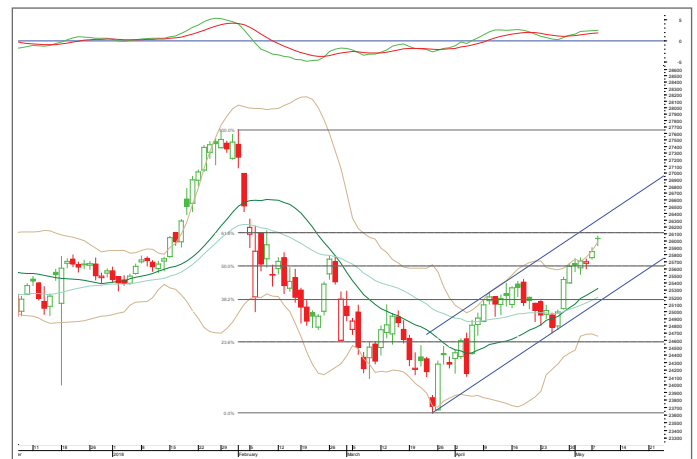
### Icon guide

↑ Up	↓ Down	↔ Sideways	↘ Downswing matures	↗ Upswing matures
------	--------	------------	---------------------	-------------------

## Bank Nifty Day Trader

Support	Resistance
25954	26220
25705	26370
25469	26500
20 DSMA	40 DEMA
25303	25170

Bank Nifty Daily



## Day Trader's Hit List

For May 09, 2018						
Scrip Name	Support Levels		Close (Rs.)	Resistance Levels		Action
	S2	S1		R1	R2	
NIFTY Futures	10605.0	10680.0	10,736.00	10807.0	10900.0	Go Short Below S1
Bank Nifty Futures	25737.0	25900.0	26,033.20	26160.0	26317.0	Go Short Below S1
Axis Bank	534.0	539.0	543.15	547.5	552.0	Go Long AboveR1
BHEL	82.2	83.0	83.60	84.2	84.9	Go Short Below S1
BPCL	386.0	389.8	393.00	396.0	399.8	Go Long AboveR1
INFOSYS	1142.0	1155.0	1,167.50	1180.0	1192.0	Go Short Below S1
ICICI Bank	302.0	305.0	308.50	312.0	315.0	Go Long AboveR1
LIC Housing	500.2	506.0	510.85	515.9	521.0	Go Short Below S1
LNT	1345.0	1356.0	1,364.90	1374.0	1385.0	Go Short Below S1
Reliance Industries	952.0	959.0	966.45	974.0	981.0	Go Long AboveR1
SBI	245.0	247.8	250.30	253.0	255.5	Go Short Below S1
SunPharma	500	507	513.00	519.5	526	Go Short Below S1
Tata Motors	325.0	328.0	331.65	335.0	338.2	Go Short Below S1
Yes Bank	337.5	341.0	344.60	348.0	352.0	Go Long AboveR1
TISCO	582.5	589.0	593.70	598.0	605.0	Go Long AboveR1
TCS	3381.0	3410.0	3,440.20	3470.0	3498.0	Go Short Below S1

\*Note: Closing price of Nifty futures is last traded price of Nifty futures on NSE  
SL=Stoploss

# Sharekhan

by BNP PARIBAS

Know more about our products and services

## For Private Circulation only

**Disclaimer:** This document has been prepared by Sharekhan Ltd. (SHAREKHAN) and is intended for use only by the person or entity to which it is addressed to. This Document may contain confidential and/or privileged material and is not for any type of circulation and any review, retransmission, or any other use is strictly prohibited. This Document is subject to changes without prior notice. Kindly note that this document is based on technical analysis by studying charts of a stock's price movement and trading volume, as opposed to focusing on a company's fundamentals and as such, may not match with a report on a company's fundamentals. (Technical specific) This document does not constitute an offer to sell or solicitation for the purchase or sale of any financial instrument or as an official confirmation of any transaction. Though disseminated to all customers who are due to receive the same, not all customers may receive this report at the same time. SHAREKHAN will not treat recipients as customers by virtue of their receiving this report.

The information contained herein is obtained from publicly available data or other sources believed to be reliable and SHAREKHAN has not independently verified the accuracy and completeness of the said data and hence it should not be relied upon as such. While we would endeavour to update the information herein on reasonable basis, SHAREKHAN, its subsidiaries and associated companies, their directors and employees ("SHAREKHAN and affiliates") are under no obligation to update or keep the information current. Also, there may be regulatory, compliance, or other reasons that may prevent SHAREKHAN and affiliates from doing so. This document is prepared for assistance only and is not intended to be and must not alone be taken as the basis for an investment decision. Recipients of this report should also be aware that past performance is not necessarily a guide to future performance and value of investments can go down as well. The user assumes the entire risk of any use made of this information. Each recipient of this document should make such investigations as it deems necessary to arrive at an independent evaluation of an investment in the securities of companies referred to in this document (including the merits and risks involved), and should consult its own advisors to determine the merits and risks of such an investment. The investment discussed or views expressed may not be suitable for all investors. We do not undertake to advise you as to any change of our views. Affiliates of Sharekhan may have issued other reports that are inconsistent with and reach different conclusion from the information presented in this report.

This report is not directed or intended for distribution to, or use by, any person or entity who is a citizen or resident of or located in any locality, state, country or other jurisdiction, where such distribution, publication, availability or use would be contrary to law, regulation or which would subject SHAREKHAN and affiliates to any registration or licencing requirement within such jurisdiction. The securities described herein may or may not be eligible for sale in all jurisdictions or to certain category of investors. Persons in whose possession this document may come are required to inform themselves of and to observe such restriction.

The analyst certifies that the analyst has not dealt or traded directly or indirectly in securities of the company and that all of the views expressed in this document accurately reflect his or her personal views about the subject company or companies and its or their securities and do not necessarily reflect those of SHAREKHAN. The analyst further certifies that neither he nor his relatives has any direct or indirect financial interest nor have actual or beneficial ownership of 1% or more in the securities of the company nor have any material conflict of interest nor has served as officer, director or employee or engaged in market making activity of the company. Further, the analyst has also not been a part of the team which has managed or co-managed the public offerings of the company and no part of the analyst's compensation was, is or will be, directly or indirectly related to specific recommendations or views expressed in this document.

Either SHAREKHAN or its affiliates or its directors or employees / representatives / clients or their relatives may have position(s), make market, act as principal or engage in transactions of purchase or sell of securities, from time to time or may be materially interested in any of the securities or related securities referred to in this report and they may have used the information set forth herein before publication. SHAREKHAN may from time to time solicit from, or perform investment banking, or other services for, any company mentioned herein. Without limiting any of the foregoing, in no event shall SHAREKHAN, any of its affiliates or any third party involved in, or related to, computing or compiling the information have any liability for any damages of any kind.

Compliance Officer: Mr. Joby John Meledan; Tel: 022-61150000; For any queries or grievances kindly email [igc@sharekhan.com](mailto:igc@sharekhan.com) or contact: [myaccount@sharekhan.com](mailto:myaccount@sharekhan.com)

**Registered Office:** Sharekhan Limited, 10th Floor, Beta Building, Lodha iThink Techno Campus, Off. JVLR, Opp. Kanjurmarg Railway Station, Kanjurmarg (East), Mumbai – 400042, Maharashtra. Tel: 022 - 61150000. Sharekhan Ltd.: SEBI Regn. Nos.: BSE: INB/INF011073351 / BSE-CD; NSE: INB/INF/INE231073330 ; MSEI: INB/INF/261073333 / INE261073330 ; DP: NSDL-IN-DP-NSDL-233-2003 ; CDSL-IN-DP-CDSL-271-2004; PMS-INP000005786 ; Mutual Fund-ARN 20669 ; Research Analyst: INH000000370; For any complaints email at [igc@sharekhan.com](mailto:igc@sharekhan.com) ; Disclaimer: Client should read the Risk Disclosure Document issued by SEBI & relevant exchanges and the T & C on [www.sharekhan.com](http://www.sharekhan.com) ; Investment in securities market are subject to market risks, read all the related documents carefully before investing..