

Eagle Eye Equities

May 14, 2018

Index

Punter's Call
Looking Trendy
Nifty Day Trader
Smart Charts
Momentum Swing
Momentum Cash Ideas
Premium Technical View
Bank Nifty
Bank Nifty Day Trader
Day Trader's Hit List

Visit us at www.sharekhan.com

Sharekhan

by BNP PARIBAS

For Private Circulation only

Punter's Call

Punter's call: Bulls take charge

May 11, 2018

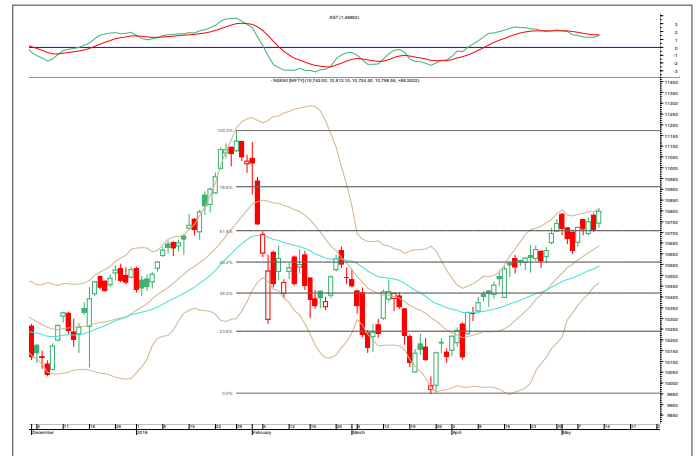
The Nifty opened gap up and ended the trading session near the day's high. The index was facing stiff resistance at 10785. However, the index broke this resistance on May 11 and closed above it. Moreover, the Nifty confirmed the higher top, higher bottom formation, thereby indicating that it can move up in the short term. It can inch higher towards 10910 i.e. 78.6% percent of its previous fall. On the way down, 10690 will provide support in the near term. Overall, we have a bullish outlook on the index for the short term with a target of 10910 and reversal at 10500.

Other technical observations

On the daily chart, the Nifty is above the 20-day moving average (DMA) and the 40-DEMA, i.e. 10638 and 10543, respectively. The momentum indicator is bearish on the daily chart.

On the hourly chart, the Nifty is above the 20-hour moving average (HMA) and the 40-HEMA, i.e. 10747 and 10726, respectively. The hourly momentum indicator is bullish and market breadth was negative with 709 advances and 1027 declines on the National Stock Exchange (NSE).

Nifty daily: 10,806.50



60-minute



Market breadth

	BSE	NSE
Todays Close	35535.79	10806.50
Advances	1120	709
Decline	1544	1027
Unchanged	141	310
Volume (Rs.)	3278.32	28622.3

Looking Trendy

Short Term Trend

Index	Target	Trend	Reversal	Support / Resistance
Nifty	10910	↑	10500	10500 / 10910

Medium Term Trend

Index	Target	Trend	Reversal	Support / Resistance
Nifty	9800	↓	11172	9800 / 11172

Icon guide

↑ Up	↓ Down	↔ Sideways	↘ Downswing matures	↗ Upswing matures
------	--------	------------	---------------------	-------------------

Nifty Day Trader

Support	Resistance
10740	10852
10689	10910
10601	10945
20 DSMA	40 DEMA
10638	10543

Smart Charts

Date	Scrip Name	Action	Stop Loss (On closing Basis)	Buy Price/ Sell Price	Call Closing Price/ CMP	Potential% P/L at Exit/ Current	Target 1	Target 2
2-May-18	LIC Housing May Fut	Sell	Book Profit	543.2	504.35	7.15%	513	487
3-May-18	Tata Comm May Fut	Sell	Exit	618.7	632.8	-2.28%	592	590
8-May-18	Andhra Bank May Fut	Sell	38.5	37.2	36.65	1.48%	35	32

NOTE: Kindly note that all stop losses in Smart Charts are on closing basis unless specified.

TPB: Trailing profit booked

Momentum Swing

Action Date	Scrip Name	Action	Stop Loss/ Reversal	Buy Price/ Sell Price	Call Closing Price/CMP	Potential% P/L at Exit/ Current	Target 1	Target 2
9-May-18	Reliance Capital May Fut	Sell	Book Profit	416.95	406	2.63%	407	398
10-May-18	Torrent Power May Fut	Sell	243	239	235.3	1.55%	233	230
10-May-18	HDFC Ltd May Fut	Sell	Stopped Out	1905.95	1927.5	-1.13%	1879	1862
11-May-18	Adani Power May Fut	Sell	24.8	24.2	24	0.83%	23.5	23
11-May-18	Dr Reddy May Fut	Sell	2061	2010.45	1994	0.82%	1940	1900

NOTE: Kindly note that all stop losses in Momentum swing are on an intra-day basis.

TPB: Trailing profit booked

- 1) The stop loss should be placed after 9.17am in order to avoid freak trade
- 2) The same will be revised in the TradeTiger terminal every day for the pop-ups

Momentum Cash Ideas

Action Date	Scrip Name	Action	Stop Loss/ Reversal	Buy Price/ Sell Price	Call Closing Price/CMP	Potential% P/L at Exit/ Current	Target 1	Target 2
11-May-18	Kansai Nerolac	Buy	500	513.75	515	0.24%	535	545

TPB: Trailing profit booked

- 1) The stop loss should be placed after 9.17am in order to avoid freak trade
- 2) The same will be revised in the TradeTiger terminal every day for the pop-ups

Premium Technical View

Action date	Scrip Name	Action	Segments	Stop loss (On Closing Basis)	Reco Price	Closing Price/ CMP	Potential P/L at CMP(%)	Target 1	Target 2
30-Apr-18	IRB Infra	Buy	Cash	250	268	258.75	-3.45%	300	330

*DCL # CMP ^Intra-day Tgt. = Target Rwd. = Reward

Bank Nifty

Short Term Trend

Index	Target	Trend	Reversal	Support / Resistance
Bank Nifty	26785	↑	25150	25150 / 26785

Medium Term Trend

Index	Target	Trend	Reversal	Support / Resistance
Bank Nifty	23500	↓	27150	23500 / 27150

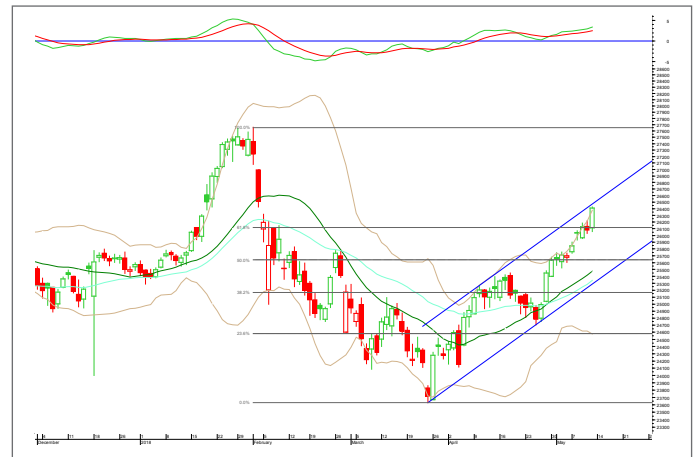
Icon guide

↑ Up	↓ Down	↔ Sideways	↘ Downswing matures	↗ Upswing matures
------	--------	------------	---------------------	-------------------

Bank Nifty Day Trader

Support	Resistance
26170	26510
26057	26786
25946	27000
20 DSMA	40 DEMA
25461	25318

Bank Nifty Daily



Day Trader's Hit List

For May 14, 2018						
Scrip Name	Support Levels		Close (Rs.)	Resistance Levels		Action
	S2	S1		R1	R2	
NIFTY Futures	10715.0	10759.0	10818.0	10830.0	10910.0	Go Long AboveR1
Bank Nifty Futures	26191.0	26308.0	26415.0	26522.0	26800.0	Go Long AboveR1
Axis Bank	543.0	548.0	556.0	558.0	571.0	Buy Above R1/ Sell Below S1
BHEL	77.0	80.0	80.5	82.2	83.0	Go Short Below S1
BPCL	395.0	397.0	399.90	401.0	408.0	Go Long AboveR1
INFOSYS	1163.0	1174.0	1183.2	1186.0	1214.0	Go Long AboveR1
ICICI Bank	305.0	307.0	310.7	313.0	319.0	Go Long AboveR1
LIC Housing	487.0	497.5	502.2	506.0	512.0	Buy Above R1/ Sell Below S1
LNT	1365.0	1374.0	1385.4	1390.0	1423.0	Go Long AboveR1
Reliance Industries	976.0	980.0	986.0	992.0	1000.0	Go Long AboveR1
SBI	240.0	246.0	250.5	252.6	257.5	Buy Above R1/ Sell Below S1
SunPharma	459	467	471.0	475	475	Go Short Below S1
Tata Motors	324.0	329.0	330.0	334.0	336.0	Go Short Below S1
Yes Bank	343.0	346.0	348.8	352.0	361.0	Go Long AboveR1
TISCO	595.0	603.0	606.0	610.6	617.0	Go Long AboveR1
TCS	3372.0	3430.0	3461.0	3485.0	3511.0	Buy Above R1/ Sell Below S1

*Note: Closing price of Nifty futures is last traded price of Nifty futures on NSE
SL=Stoploss

Sharekhan

by BNP PARIBAS

Know more about our products and services

For Private Circulation only

Disclaimer: This document has been prepared by Sharekhan Ltd. (SHAREKHAN) and is intended for use only by the person or entity to which it is addressed to. This Document may contain confidential and/or privileged material and is not for any type of circulation and any review, retransmission, or any other use is strictly prohibited. This Document is subject to changes without prior notice. Kindly note that this document is based on technical analysis by studying charts of a stock's price movement and trading volume, as opposed to focusing on a company's fundamentals and as such, may not match with a report on a company's fundamentals. (Technical specific) This document does not constitute an offer to sell or solicitation for the purchase or sale of any financial instrument or as an official confirmation of any transaction. Though disseminated to all customers who are due to receive the same, not all customers may receive this report at the same time. SHAREKHAN will not treat recipients as customers by virtue of their receiving this report.

The information contained herein is obtained from publicly available data or other sources believed to be reliable and SHAREKHAN has not independently verified the accuracy and completeness of the said data and hence it should not be relied upon as such. While we would endeavour to update the information herein on reasonable basis, SHAREKHAN, its subsidiaries and associated companies, their directors and employees ("SHAREKHAN and affiliates") are under no obligation to update or keep the information current. Also, there may be regulatory, compliance, or other reasons that may prevent SHAREKHAN and affiliates from doing so. This document is prepared for assistance only and is not intended to be and must not alone be taken as the basis for an investment decision. Recipients of this report should also be aware that past performance is not necessarily a guide to future performance and value of investments can go down as well. The user assumes the entire risk of any use made of this information. Each recipient of this document should make such investigations as it deems necessary to arrive at an independent evaluation of an investment in the securities of companies referred to in this document (including the merits and risks involved), and should consult its own advisors to determine the merits and risks of such an investment. The investment discussed or views expressed may not be suitable for all investors. We do not undertake to advise you as to any change of our views. Affiliates of Sharekhan may have issued other reports that are inconsistent with and reach different conclusion from the information presented in this report.

This report is not directed or intended for distribution to, or use by, any person or entity who is a citizen or resident of or located in any locality, state, country or other jurisdiction, where such distribution, publication, availability or use would be contrary to law, regulation or which would subject SHAREKHAN and affiliates to any registration or licencing requirement within such jurisdiction. The securities described herein may or may not be eligible for sale in all jurisdictions or to certain category of investors. Persons in whose possession this document may come are required to inform themselves of and to observe such restriction.

The analyst certifies that the analyst has not dealt or traded directly or indirectly in securities of the company and that all of the views expressed in this document accurately reflect his or her personal views about the subject company or companies and its or their securities and do not necessarily reflect those of SHAREKHAN. The analyst further certifies that neither he nor his relatives has any direct or indirect financial interest nor have actual or beneficial ownership of 1% or more in the securities of the company nor have any material conflict of interest nor has served as officer, director or employee or engaged in market making activity of the company. Further, the analyst has also not been a part of the team which has managed or co-managed the public offerings of the company and no part of the analyst's compensation was, is or will be, directly or indirectly related to specific recommendations or views expressed in this document.

Either SHAREKHAN or its affiliates or its directors or employees / representatives / clients or their relatives may have position(s), make market, act as principal or engage in transactions of purchase or sell of securities, from time to time or may be materially interested in any of the securities or related securities referred to in this report and they may have used the information set forth herein before publication. SHAREKHAN may from time to time solicit from, or perform investment banking, or other services for, any company mentioned herein. Without limiting any of the foregoing, in no event shall SHAREKHAN, any of its affiliates or any third party involved in, or related to, computing or compiling the information have any liability for any damages of any kind.

Compliance Officer: Mr. Joby John Meledan; Tel: 022-61150000; For any queries or grievances kindly email igc@sharekhan.com or contact: myaccount@sharekhan.com

Registered Office: Sharekhan Limited, 10th Floor, Beta Building, Lodha iThink Techno Campus, Off. JVLR, Opp. Kanjurmarg Railway Station, Kanjurmarg (East), Mumbai – 400042, Maharashtra. Tel: 022 - 61150000. Sharekhan Ltd.: SEBI Regn. Nos.: BSE: INB/INF011073351 / BSE-CD; NSE: INB/INF/INE231073330 ; MSEI: INB/INF/261073333 / INE261073330 ; DP: NSDL-IN-DP-NSDL-233-2003 ; CDSL-IN-DP-CDSL-271-2004; PMS-INP000005786 ; Mutual Fund-ARN 20669 ; Research Analyst: INH000000370; For any complaints email at igc@sharekhan.com ; Disclaimer: Client should read the Risk Disclosure Document issued by SEBI & relevant exchanges and the T & C on www.sharekhan.com ; Investment in securities market are subject to market risks, read all the related documents carefully before investing..